

インテル® vPro® プラットフォームを 選ぶべき10の理由



インテル® vPro® プラットフォームを選ぶべき10の理由

「PCの種類が多過ぎてどれを買えばわからない…」というIT管理者、必見です。

■ 日々の業務にあると便利な機能

- Thunderbolt 4

■ オンライン会議で役立つ機能

- インテル® Iris®xeグラフィックスとWiFi6/Eによるオンライン会議の品質・生産性向上

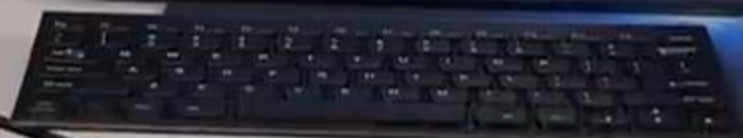
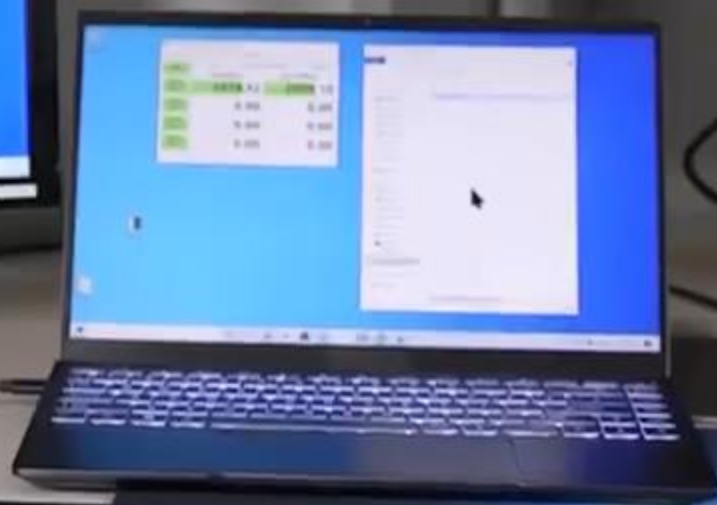
■ いざという時に備えたい機能

- インテル® コントロールフロー・エンフォースメント・テクノロジー (インテル® CET)
- インテル® スレット・ディテクション・テクノロジー (インテル® TDT)
- インテル® ハードウェア・シールド

■ IT管理者が重宝する機能

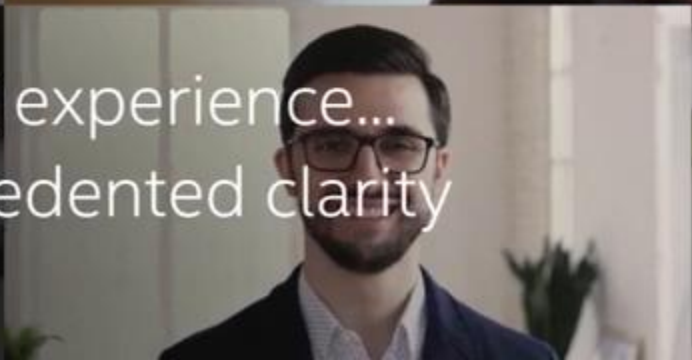
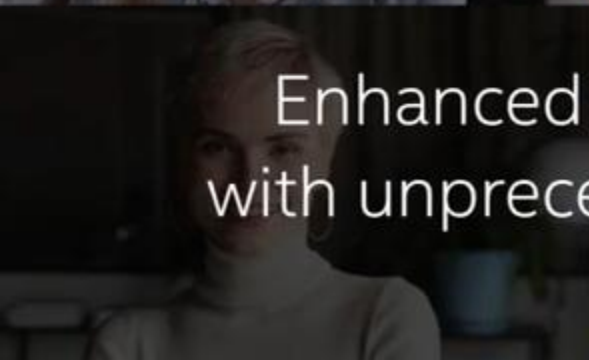
- リモートから電源オン&帯域外KVM でBIOSへアクセス
- リモートからBitlocker
- リモートからOS初期化
- リモートからSSDデータ消去
- 様々なフォームファクターがOEM各社よりリリースされ一元管理が簡単

Thunderbolt 4





インテル® Iris®xeグラフィックスとWiFi6/Eによるオンライン会議の品質・生産性向上



Enhanced experience...
with unprecedented clarity

インテル® スレット・ディテクション・テクノロジー (インテル® TDT)

```
XMRRig 6.10.0
[2021-04-14 14:43:56.548] unable to open "C:\Users\rdgho\AppData\Local\Temp\IXP000.TMP\config.json".
* HUGE PAGES permission granted
* 1GB PAGES unavailable
* CPU Intel(R) Core(TM) i5-10300H CPU @ 2.50GHz (1) 64-bit AES
L2:1.0 MB L3:8.0 MB 4C/8T NUMA:1
* MEMORY 2.777.8 GB (35%)
Bottom - Slot 1 (Up): 4 GB DDR4 @ 2933 MHz 4ATF51264HZ-3G2J1
Bottom - Slot 2 (down): 4 GB DDR4 @ 2933 MHz 4ATF51264HZ-3G2J1
* MOTHERBOARD HP - 87AF
* DONATE 5%
* ASSEMBLY auto:intel
* OPENCL disabled
* CUDA disabled
[2021-04-14 14:43:56.915] cpu use argon2 implementation AVX2
[2021-04-14 14:43:56.916] msr to access MSR registers Administrator privileges required.
[2021-04-14 14:43:56.917] msr FAILED TO APPLY MSR MOD, HASHRATE WILL BE LOW
[2021-04-14 14:43:56.918] randomx init dataset algo rx/0 (8 threads) seed aef2d93d89bcfbel...
[2021-04-14 14:43:56.923] randomx allocated 2336 MB (2080+256) huge pages 0% 0/1168 +JIT (4 ms)
[2021-04-14 14:44:02.559] randomx dataset ready (5636 ms)
[2021-04-14 14:44:02.560] cpu use profile rx (4 threads) scratchpad 2048 KB
[2021-04-14 14:44:02.619] cpu READY threads 4/4 (4) huge pages 0% 0/4 memory 8192 KB (58 ms)
```

Task Manager

File Options View

Processes Performance App history Startup Users Details Services

Name	PID	Status	User name	CPU	Memory (ac...	UAC virtualizati...
1FCD99-1.EXE	10028	Running	rdgho	47	2,410,116 K	Disabled
AppHelperCap.exe	3328	Running	SYSTEM	00	0 K	Not allowed
ApplicationFrameHo...	9576	Running	rdgho	00	6,584 K	Disabled
audiodg.exe	2476	Running	LOCAL SER...	00	5,656 K	Not allowed
conhost.exe	11920	Running	rdgho	00	6,444 K	Disabled
conhost.exe	7496	Running	rdgho	00	5,808 K	Disabled
csrss.exe	512	Running		00	548 K	
csrss.exe	1060	Running		01	676 K	
ctfmon.exe	7912	Running	rdgho	00	4,348 K	Disabled

Fewer details End task

Intel® TDT detects and
Microsoft Defender
blocks attack

Windows Security

Virus & threat protection

Threats found
Microsoft Defender Antivirus found threats. Get details.



インテル® ハードウェア・シールド

INTEL HARDWARE SHIELD NOT PRESENT - VULNERABLE

BitLocker

Enter the password to unlock this drive

password1

Press the Insert key to see the password as you type.

Taskbar area showing icons for Windows, Internet Explorer, Intel vPro, Google, and other applications. Below the icons are user names: Rajesh Krishnan, DHOLLW..., www.co..., www.int..., Corporate Purchasing, gmail.go..., and jdoe-2.

INTEL HARDWARE SHIELD ENABLED



Memory region	0x264480000	-	0x264500000	LOCKED
Memory region	0x264500000	-	0x264580000	LOCKED
Memory region	0x264580000	-	0x264600000	LOCKED
Memory region	0x264600000	-	0x264680000	LOCKED
Memory region	0x264680000	-	0x264700000	LOCKED
Memory region	0x264700000	-	0x264780000	LOCKED
Memory region	0x264780000	-	0x264800000	LOCKED
Memory region	0x264800000	-	0x264880000	LOCKED



For further information about Intel® Hardware Shield, scan this code:



No computer system, product or component can provide absolute security under all conditions. Built-in security features available on select Intel® Core™ processors may require additional software, hardware, services, and/or an Internet connection. Results may vary depending upon configuration. Consult your PC manufacturer for more details.

リモートから電源オン&帯域外KVMでBIOSへアクセス

889C20328E35E5D4...

Endpoints



Users



Endpoint Groups



Storage



Settings

System Status

Remote Desktop

Network Settings

Security Settings

User Accounts

Alarm Clocks

Event Log

Audit Log

Hardware Information

Remote Desktop

Settings...

Disconnect

Power Actions

Powered on

Intel® Visual BIOS



Advanced

Intel® Desktop Board NUC7i5DNB

BIOS Version: DNKBLi5v.86A.0073.2021.0414.1654 [Update >](#)

Processor: Intel(R) Core(TM) i5-7300U CPU @ 2.60GHz

Total Memory: 16GB

System Date & Time: 10/29/2021 03:58:08 AM [Change >](#)

Boot Order

Drag or +/- to sort boot priority. Double-click a device to boot from it now.

UEFI

Legacy

UEFI Boot

Boot Drive Order

UEFI : SATA : PORT 0 : Windows Bo

Advanced

Performance Monitor

Fan Speeds (RPM)



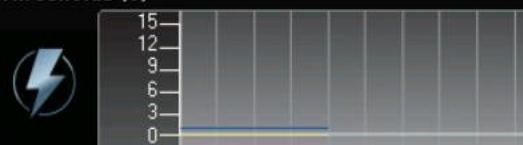
CPU FAN 2296.00

Temperatures (C)



CPU Core Temp 37.00
Memory Temp 25.00
Motherboard Ambien 25.00
PCH Temp 30.00

Thresholds (V)



SDRAM 1.20
CPU1 INPUT 0.84

Endpoints

Users

Endpoint Groups

Storage

Settings

- System Status
- Remote Desktop
- Network Settings
- Security Settings
- User Accounts
- Alarm Clocks
- Event Log
- Audit Log
- Hardware Information

Remote Desktop

Settings... Disconnect Power Actions Powered on

BitLocker

Enter the PIN to unlock this drive

Press the Insert key to see the PIN as you type.

Press Enter to continue
Press Esc for BitLocker recovery

Ctrl-Alt-Del Primary display Focus Off Full Screen

リモートからWindows10回復コンソールOS初期化画面へアクセス

Endpoints

Users

Endpoint Groups

Storage

Settings

System Status

Remote Desktop

Network Settings

Security Settings

User Accounts

Alarm Clocks

Event Log

Audit Log

Hardware Information

Remote Desktop

Settings...

Disconnect

Power Actions

Powered on

オプションの選択

→ 続行
終了して Windows 10
に進みます

PC の電源を切る

デバイスの使用
USB ドライブ、ネットワーク接続、または
Windows リカバリ DVD を使います

トラブルシューティング
PC を初期状態に戻すか、詳細オプションを
表示します

Ctrl-Alt-Del

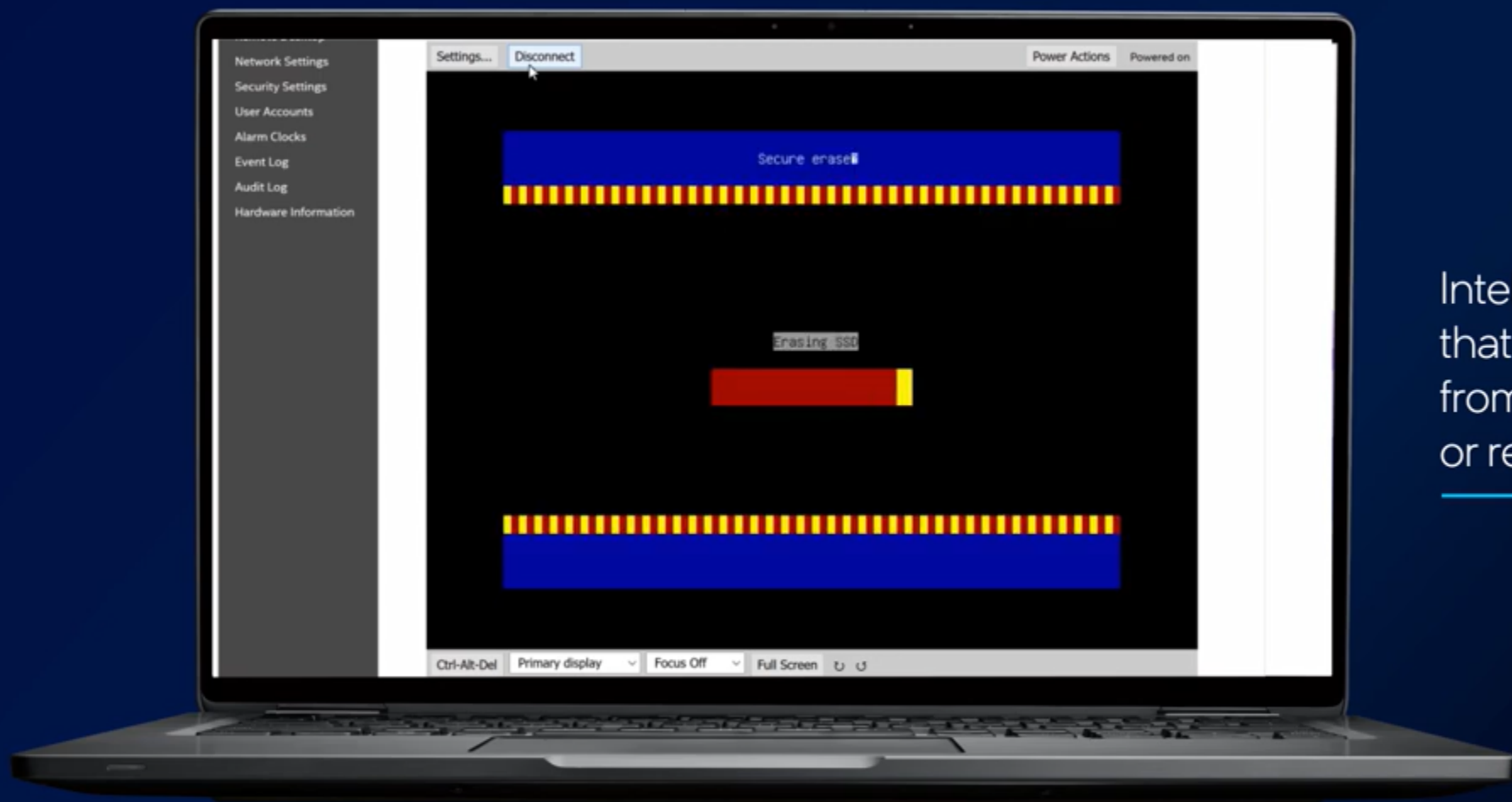
Primary display

Focus Off

Full Screen



リモートからSSDデータ消去



Intel RSE is useful for ensuring that sensitive data is removed from a device before reusing or retiring it.

インテル® vPro® プラットフォーム

あらゆる規模のIT組織にフォームファクタとOEMを問わず価値を提供



デスクトップPC
ノートブック
モダンデザイン
ワークステーション



ご清聴有難うございました